



1:32 Scale Flying Sub™ Photoetched Interior Upgrades

THE FANTASY WORLDS
OF IRWIN ALLEN®

PGX112 Instructions V1.2

INTRODUCTION

Thank you for purchasing ParaGrafix's photoetched enhancement set for the Moebius Models 1:32 scale Flying Sub model kit. We have made every effort to ensure that these parts can be used successfully by a modeler of modest experience, but there may be items that require advanced modeling techniques. For basic primers on the use of photoetch, please visit <http://www.paragrafix.biz/instructions> or http://www.starshipmodeler.com/tech/jl_pe.htm and other resources available on the web.



COMPLETE PHOTOETCH INSTALLATION BEFORE ASSEMBLING KIT INTERIOR.

PLEASE NOTE:

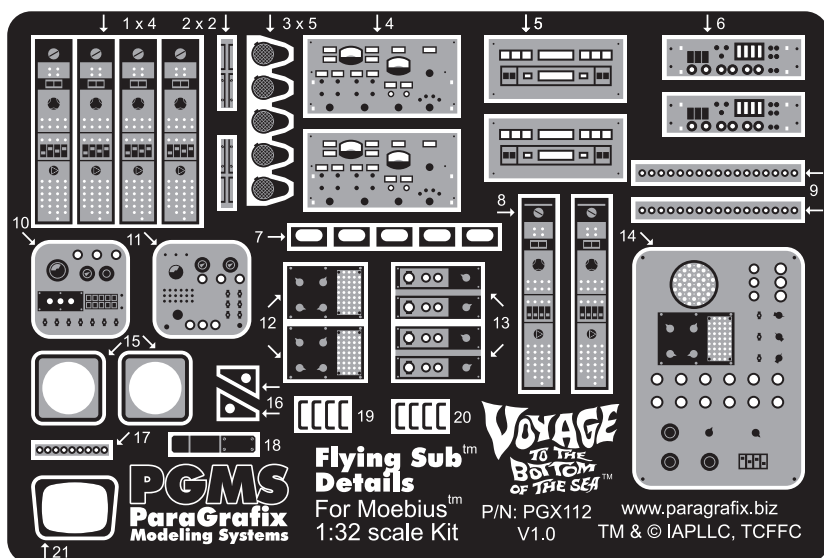
This photoetch set is NOT compatible with ParaGrafix's decal set P/N: PGX115 or any third-party decals. **ONLY** decal set P/N: PGX114 is designed to properly align with these photoetched parts.

Materials

In addition to the photoetch, you will also need scissors or a knife* to remove individual pieces from the main fret, a file to remove material left from cutting, and super glue (aka CA or cyanoacrylate). Additionally, to fold some pieces, you will need a pair of razor blades** or a specialty tool such as an Etchmate 3C from Mission Models.

* We prefer a #17 Xacto chisel blade.

** Extreme care must be taken when using razor blades. Risk of serious injury.



Key

Kit part (plastic): 1

Photoetched part: 1

Back-Light Film: A

Raised Detail

Each part of these instructions notes an area where the raised kit detail must be removed. This may be done in whatever way you are most comfortable: sanding, filing, chiseling. Note that in most cases the surface does not need to be perfectly smooth as the photoetched part will replace the "lost" kit detail.

Lighting Options

Unless otherwise noted, you can prep areas for lighting by removing plastic from areas where there are through holes in the photoetch. You can then backlight the photoetch. For best results, we suggest using Micro Kristal Klear from Microscale Industries (www.microscale.com) to fill the through holes. Use MKK even if you will be using the ParaGrafix decals PGX114, as this will give the decals some support. Alternatively, MKK can be tinted for different colored lights.

The back-light film has been over-sprayed with Testors Clear Lacquer. Ensure that any paint used further clear coating you may do after installation is compatible with this paint.

Microphones

Five microphones (part #3) are included and may be located at the builders discretion. For most accurate results, one should be placed about half-way up on the face of each front girder (kit parts #45), and one on the port (left) side of kit part 27.


Installation Parts Order

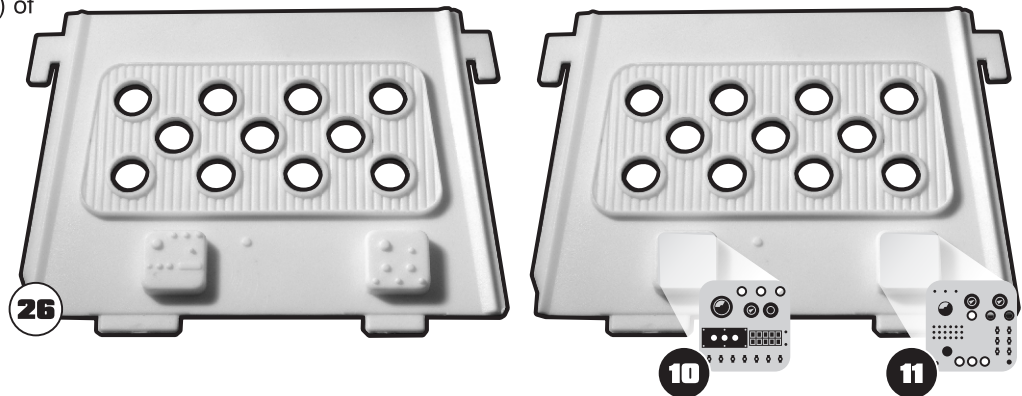
The main piloting station has been left until the final step as it has the most intricate assembly. If you are already familiar with the use of photoetched parts, you can perform the installation steps in any order.

Part 1: Reactor Core Wall

Remove the raised details from the two lower control consoles as shown.

TIP: The 13 “eye” shaped areas on etch parts 10 and 11 are the bases of toggle switches. To add the switches themselves, you can glue a short length (roughly 0.05”, 1.25mm) of 0.01” (0.25mm) diameter rod into the alignment hole.

 “Eye” shaped area at 5:1 scale



Part 2: “Stateroom” Wall

“Stock” Wardrobe - Left-hand Image

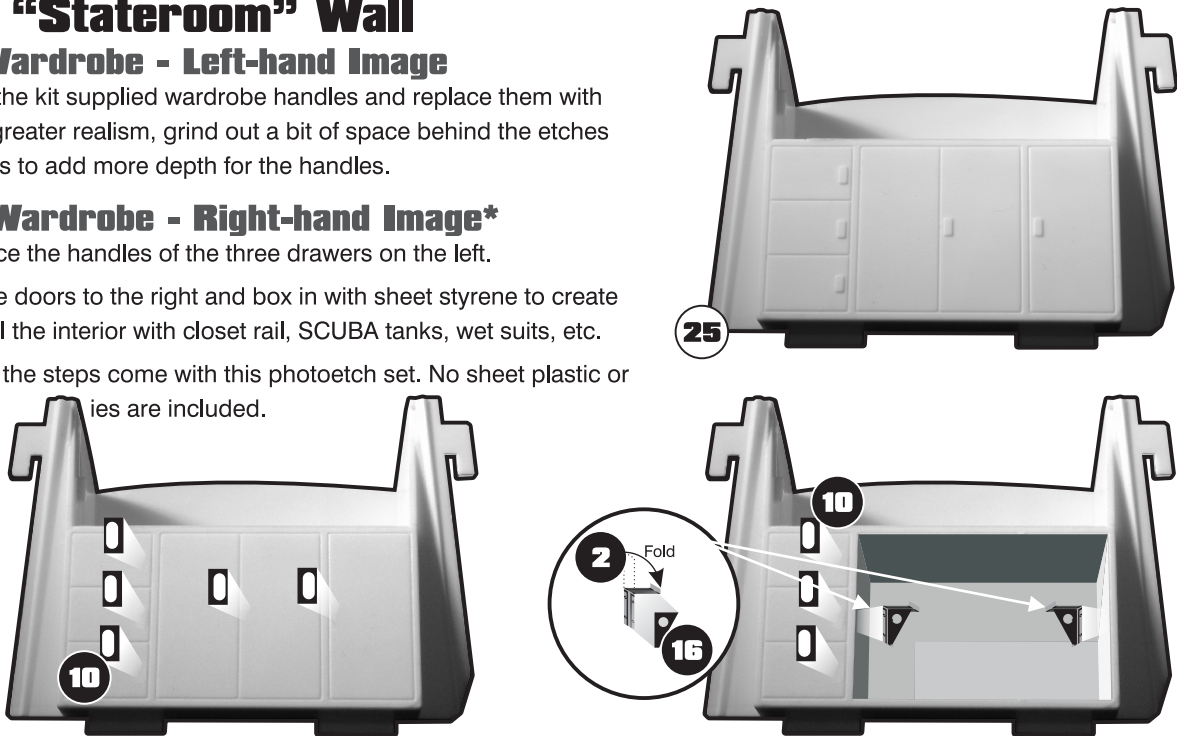
Simply remove the kit supplied wardrobe handles and replace them with etch parts. For greater realism, grind out a bit of space behind the etches pieces’ openings to add more depth for the handles.

“Closet” Wardrobe - Right-hand Image*

As above, replace the handles of the three drawers on the left.

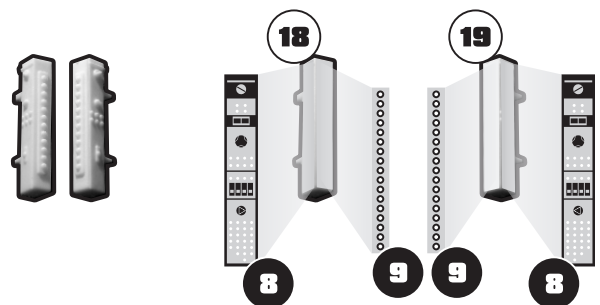
Cut out the three doors to the right and box in with sheet styrene to create the closet. Detail the interior with closet rail, SCUBA tanks, wet suits, etc.

* Note that only the steps come with this photoetch set. No sheet plastic or other accessories are included.



Part 3: Cockpit Side Consoles

Simply remove the surface detail and attach the photoetched parts.



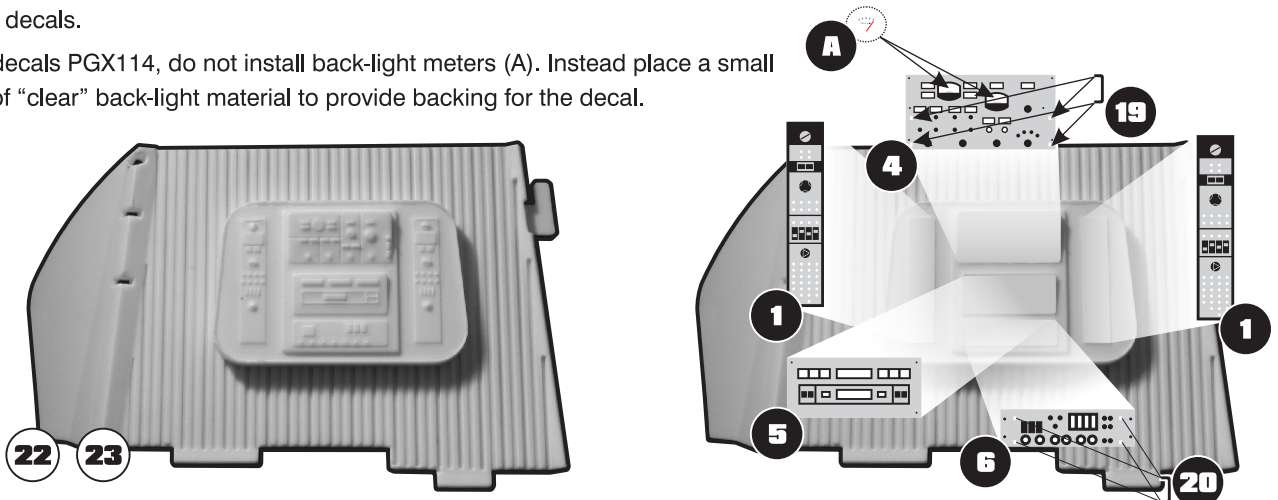
Part 4: Power Controls

REPEAT TWICE - once using kit part 22 and once using kit part 23.

Remove raised detail but retain the basic console shapes as shown. If lighting, remove plastic material from behind the panel meters in piece 4 to allow for installation of back-light panels A. After attaching the photoetch, trim and install panels A from behind using a clear glue, such as Micro Kristal Klear - the glossy side of the panel should be facing out.

Install handles (parts 19 and 20) at 90° into the slots provided in parts 4 and 6. If using decals PGX114, install handles after applying decals.

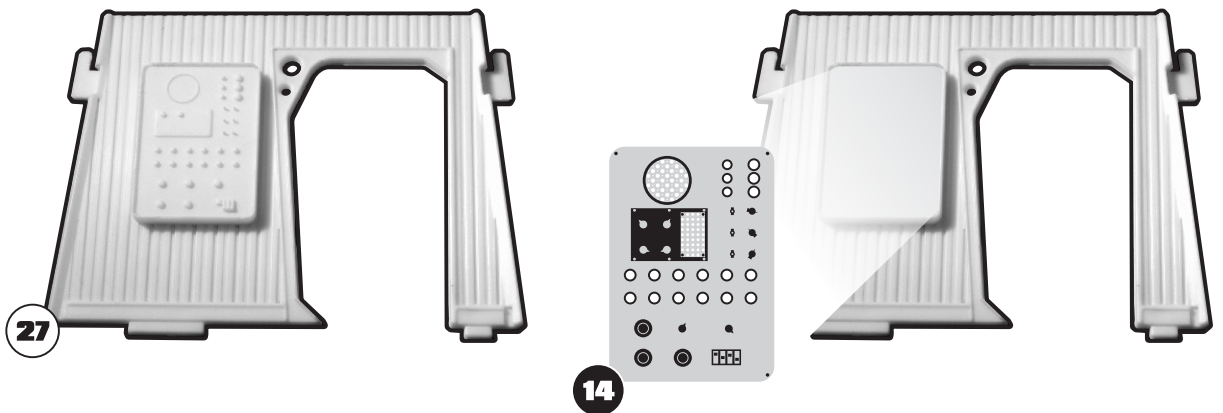
If using decals PGX114, do not install back-light meters (A). Instead place a small section of "clear" back-light material to provide backing for the decal.



Part 5: Communications Console

Remove the raised detail inside the console, but leave the raised edge in place, as shown.

TIP: The 3 "eye" shaped areas on etch part 14 are the bases of toggle switches. To add the switches themselves, you can glue a short length (roughly 0.05", 1.25mm) of 0.01" (0.25mm) diameter rod into the alignment hole.

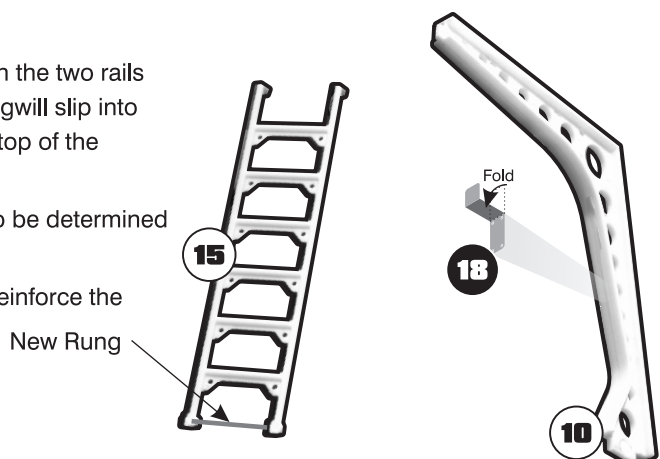


Part 6: Ladder Stowage

Add a length of 0.04"x0.08" (1x2mm) flat styrene stock between the two rails at the bottom of the ladder (kit part 15) as shown. This new rung will slip into the ladder clip (etch part 18) when in the stowed position. The top of the ladder should be glued to the inner ring.

NOTE: The position of the ladder clip (etch part 18) will need to be determined once the "cage" has been assembled.

TIP: Use gap filling super glue or a small wedge of styrene to reinforce the folds in the ladder clip.



Part 7: Piloting Control Consoles

Remove the raised details from the control consoles as shown. Leave the raised ridge around the center "TV" display.

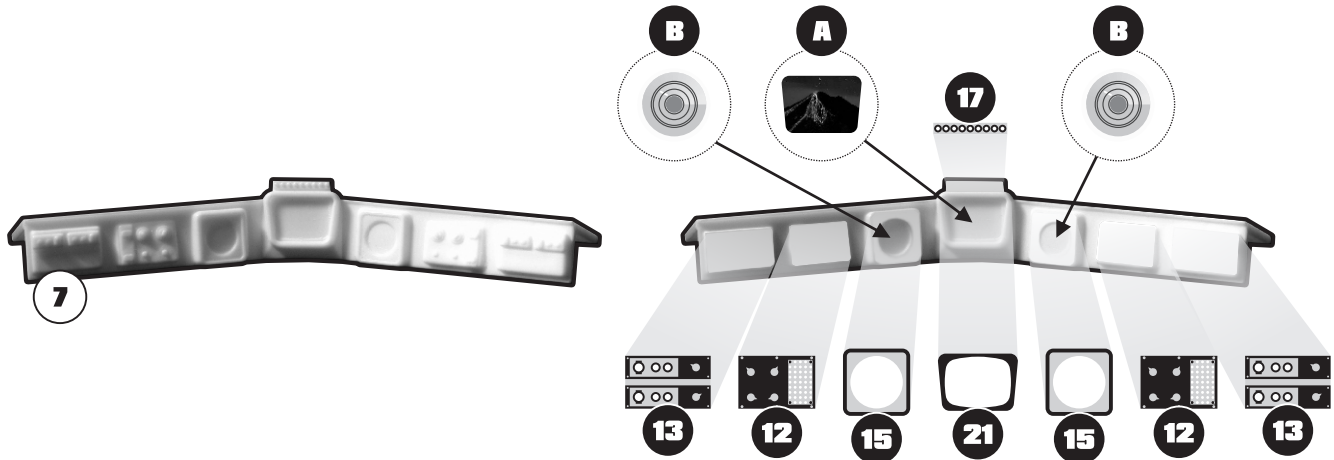
If Lighting and/or Using the Supplied Back-Light Display Panels

Several options for back-light panels A and B are offered so that you can choose a look you like.

Remove plastic material from kit part 7 behind etch parts 15 and 21. Allow a lip so that back-light panels A and B can be trimmed and placed in from behind. Use a clear adhesive such as Micro Kristal Klear to hold the units in place.

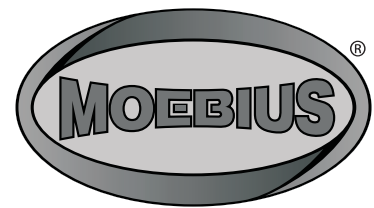
If Using the Separately Available Decal Set and NOT the Back-Light Display Panels

The back-light display panels can be used in conjunction with the separately available decals. If you decide to just use the decals pieces for the three display screens in place you will need to fill the circular indentations in the plastic where etch pieces 15 are located.



VOYAGE
TO THE
BOTTOM
OF THE SEA™

THE FANTASY WORLDS
OF IRWIN ALLEN®



Thank you to Frank Winspur and Dave Metzner of Moebius Models for making such a great kit, and for their help and encouragement during the development of this add-on set.

Special thanks to Bob Pauly for allowing us to use his Flying Sub "patch" graphic.

PGMS
ParaGrafix
Modeling Systems

148 Rocklawn Ave.
Attleboro MA 02703 USA
+1 508-431-9800
www.ParaGrafix.biz

"Voyage to the Bottom of the Sea"™ is © Irwin Allen Properties, LLC and Twentieth Century Fox Film Corporation. Licensed by Synthesis Entertainment. All Rights Reserved.

"The Fantasy Worlds of Irwin Allen"® is a registered trademark of Synthesis Entertainment. All Rights Reserved.

Moebius® is a registered trademark of Moebius Models. All Rights Reserved.

ParaGrafix and PGMS are TM Paul H. Bodensiek. All Rights Reserved.

1:32 Scale Flying Sub™ Decals for Photoetched Interior

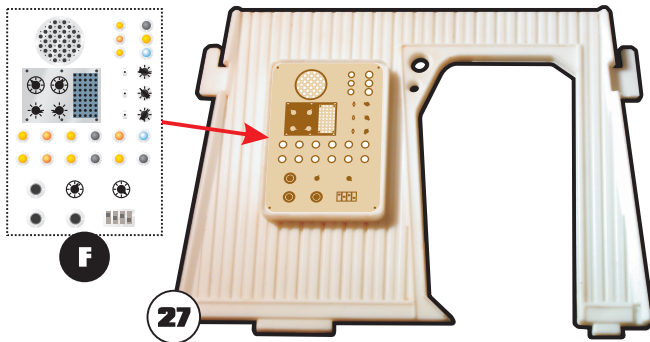
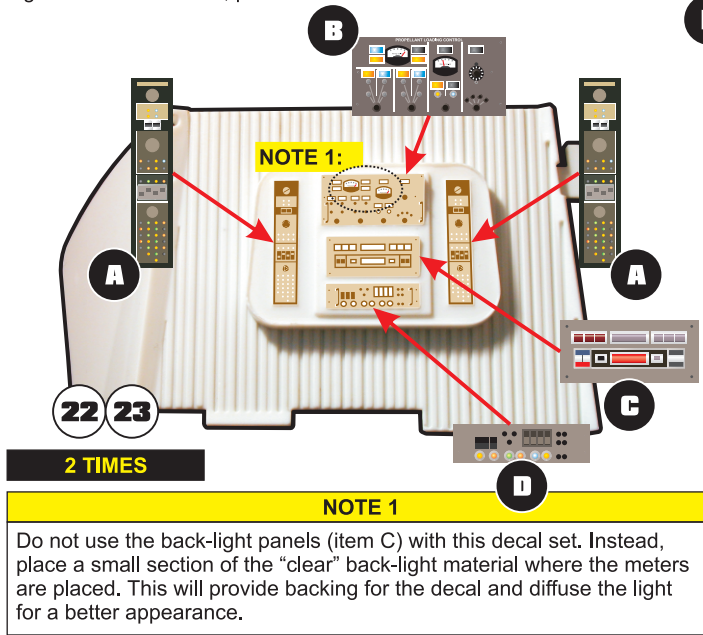
Thank you for purchasing ParaGrafix's interior decal set for the Moebius Models 1:32 scale Flying Sub model kit.

Install photoetched parts, paint, and apply decals before assembling the kit interior.

For detailed instructions on the use of these decals, please see the enclosed instructions by JT Graphics.

PLEASE NOTE:

This decal set is NOT compatible with the stock kit interior. You must use the ParaGrafix photoetch set P/N: PGX112 with these decals. If you are building the stock kit interior, please use ParaGrafix decals P/N: PGX115.

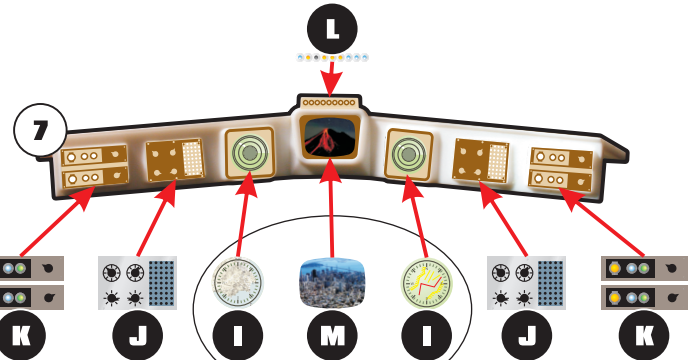


PGMS
ParaGrafix
Modeling Systems

148 Rocklawn Ave,
Attleboro MA 02703
(508) 431-9800

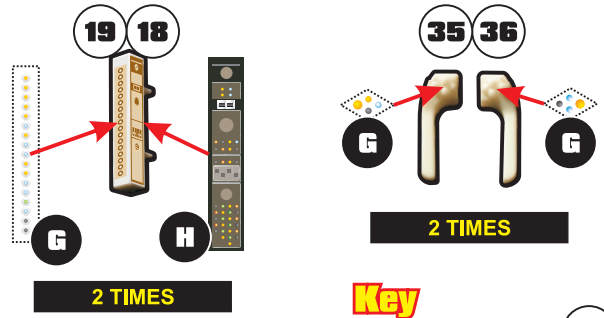
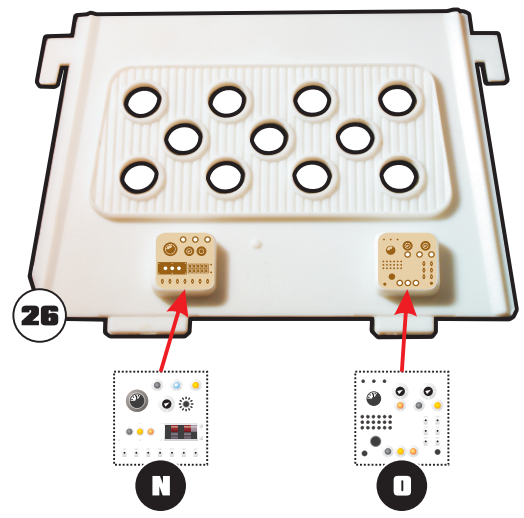
Thank you to Frank Winspur and Dave Metzner of Moebius Models for making such a great kit, and for their help and encouragement during the development of this add-on set.

Special thanks to Bob Pauly for allowing us to use his Flying Sub "patch" graphic.



OPTIONAL

If lighting, use etch supplied back-light parts A & B. Multiple designs included for each display.



www.paragrafix.biz
PGX114 - Instructions V1.0

Key
Kit part (plastic): **1**
Decal: **A**