

EVA pod

extravehicular activity pod photoetch set

PARA GRAFIX™
PGX220

ParaGrafix states that our use of the trademarked terms listed below in our product descriptions constitutes fair use and nominative use and is in no way to offer confusion that ParaGrafix and any of the following noted trademark holders are related companies, nor do we state that we are endorsed by these trademark holders. We are an AFTERMARKET company acting in GOOD FAITH in providing high quality products to loyal customers who have already purchased products related to these trademarks. ParaGrafix is actually providing these trademark holders a venue of free advertising and indirectly provide these trademark holders with more sales leads. 2001: A Space Odyssey and all related characters and elements © & ™ TEC. (s17)

INTRODUCTION

Thank you for purchasing ParaGrafix's photoetch set for the EVA Pod kit from Moebius Models®. This set is intended for use by modelers who will be lighting their EVA Pod's interior. The photoetch will block light from the control panels except where the buttons and displays are located.

Materials

In addition to the photoetch, you will also need scissors or a knife* to remove individual pieces from the main fret, a file to remove material left from cutting, and super glue (aka CA or cyanoacrylate).

* We prefer a #17 Xacto chisel blade.

** Extreme care must be taken when using razor blades. Risk of serious injury.

Lighting Options

For best results, we suggest using Micro Kristal Klear from Microscale Industries (www.microscale.com) or Testors Clear Parts Adhesive and Window Maker (www.testors.com) to fill the through holes and/or make lenses for lights.

Decals

All control panel photoetch parts should be painted with gloss paint prior to attaching the decals. This will provide a proper surface for applying the decals as well as provide color for the edges of the photoetch beyond where the decals fit.

Attach decals to the photoetched parts before attaching the photoetch to the kit parts.

NOTE: Wait until the water activated adhesive on the back of the decals has fully cured, then carefully cut out all buttons and display screen locations using a sharp #11 blade. This will allow the photoetch to simply drop right onto the kit parts.

Installation Parts Order

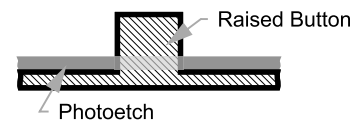
The installation steps are not in any particular order. You can complete them as you see fit to complement your kit construction order.

Key

Kit part (plastic): **1**

Decal: **1**

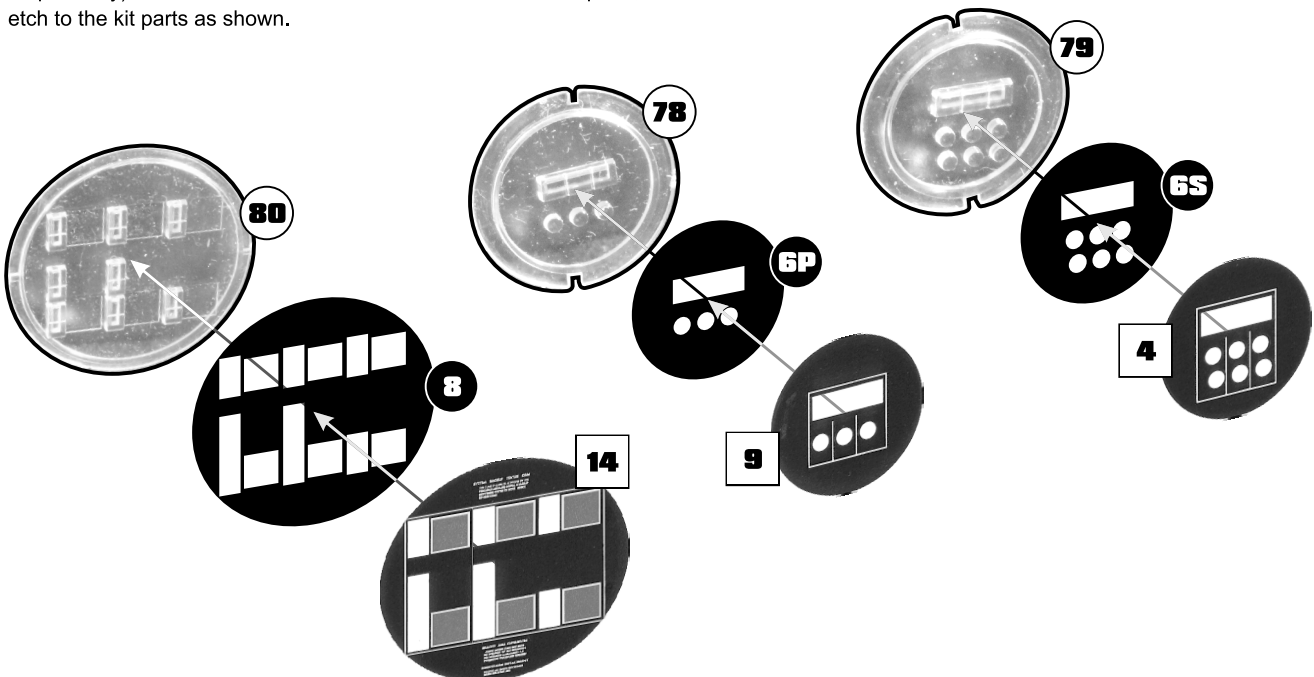
Photoetched part: **1**



CIRCULAR PANELS

Stock Panels

Paint photoetch parts 6P, 6S, and 8 apply the appropriate decal (4, 9, and 14, respectively). Trim the decals from the holes in all of the etch parts, then mount the etch to the kit parts as shown.



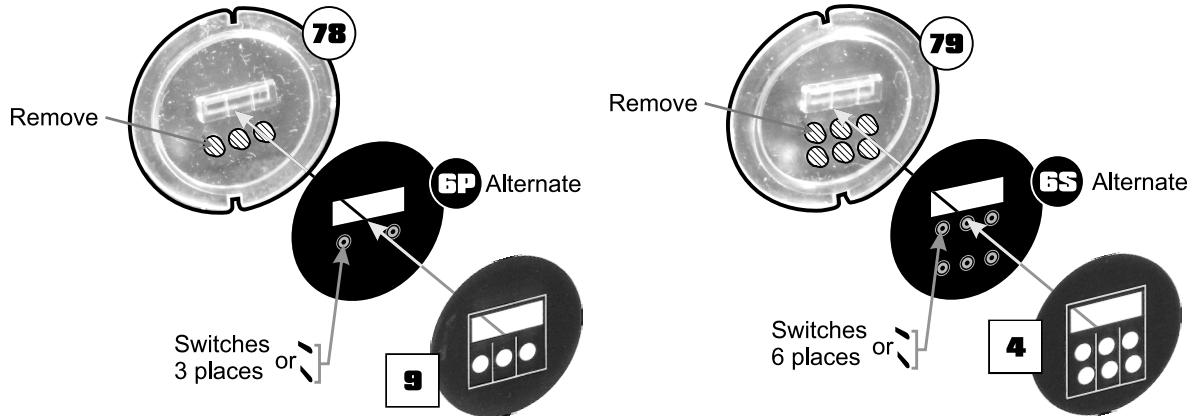
CIRCULAR PANELS

Stock Panels

Paint photoetch parts 6P Alternate and 6S Alternate, then apply the appropriate decal (4 and 9). Trim the decals from the holes in all of the etch parts, then mount the etch to the kit parts as shown.

You may need to touch up the paint at the 3 or 6 clear, round areas of the decals. Then, paint the circular areas of the etch (edges will be visible through the decal) silver.

Mount the appropriate number of toggle switches (found at the lower right-hand corner of the Starboard photoetch sheet).

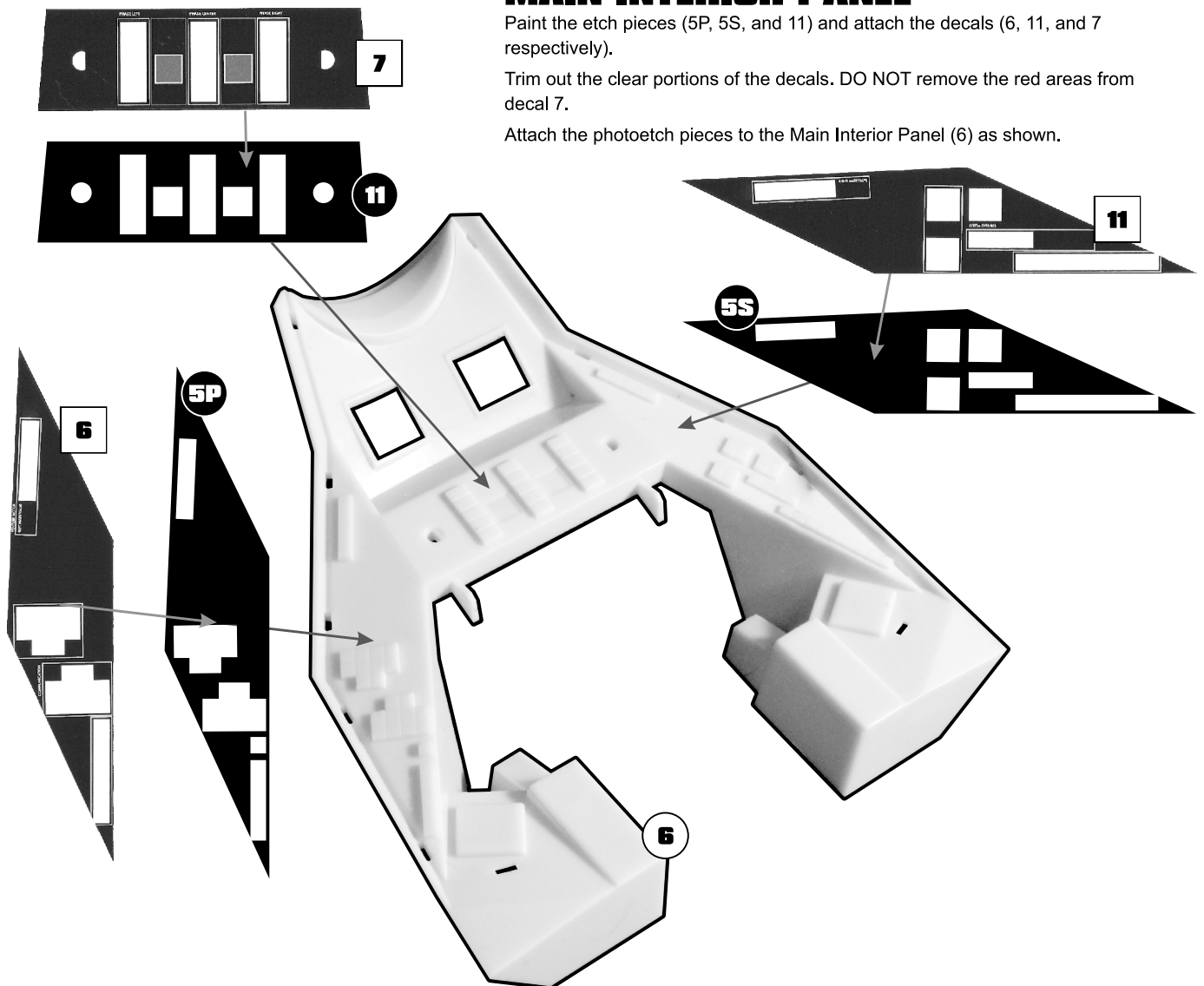


MAIN INTERIOR PANEL

Paint the etch pieces (5P, 5S, and 11) and attach the decals (6, 11, and 7 respectively).

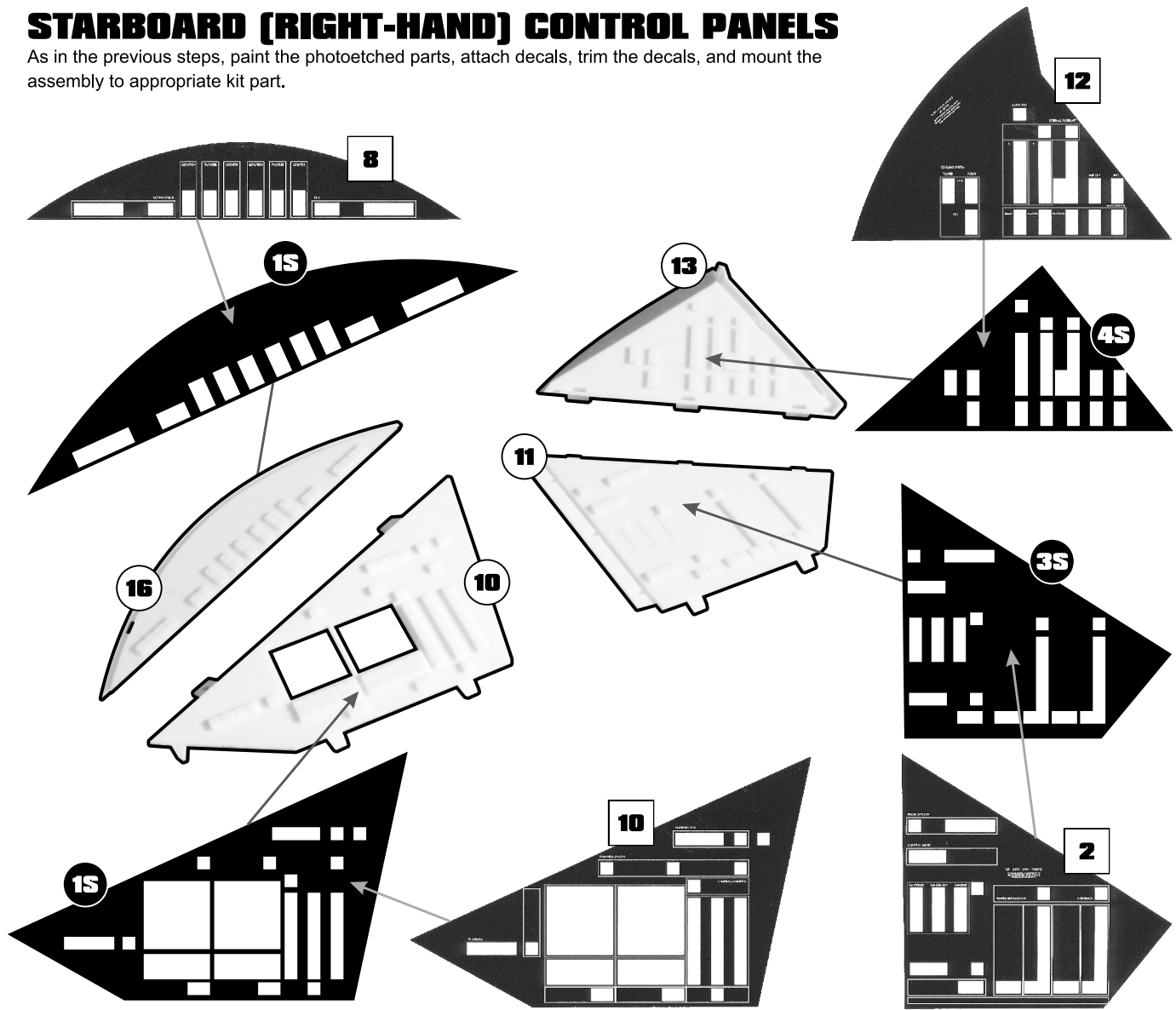
Trim out the clear portions of the decals. DO NOT remove the red areas from decal 7.

Attach the photoetch pieces to the Main Interior Panel (6) as shown.



STARBOARD (RIGHT-HAND) CONTROL PANELS

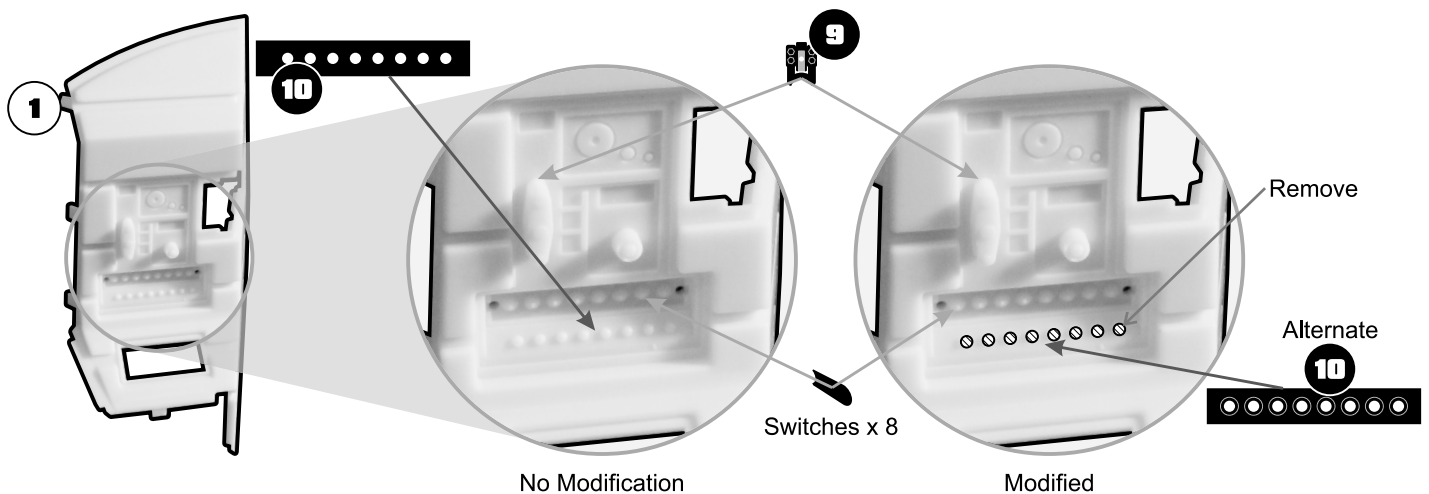
As in the previous steps, paint the photoetched parts, attach decals, trim the decals, and mount the assembly to appropriate kit part.



REAR STARBOARD (RIGHT) PANEL

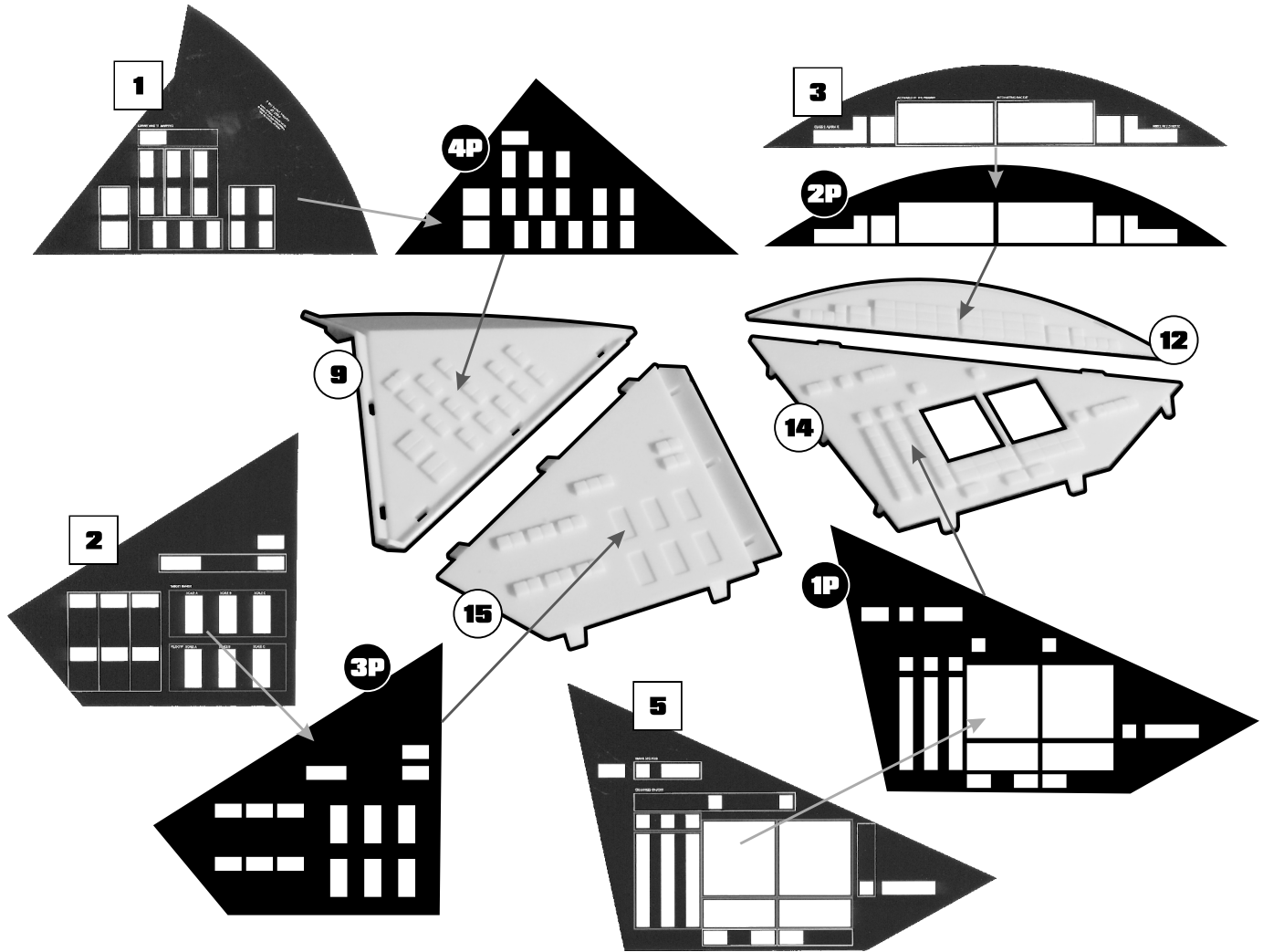
The 8 lights located below the communications switches should be evenly spaced, directly below each switch. You can either mask them with etch part 10; or remove the raised lights, use etch part 10 Alternate, and replace the raised domes with drops of Micro Krystal Klear.

Attach the explosive bolts latch along with the 8 switches as shown.



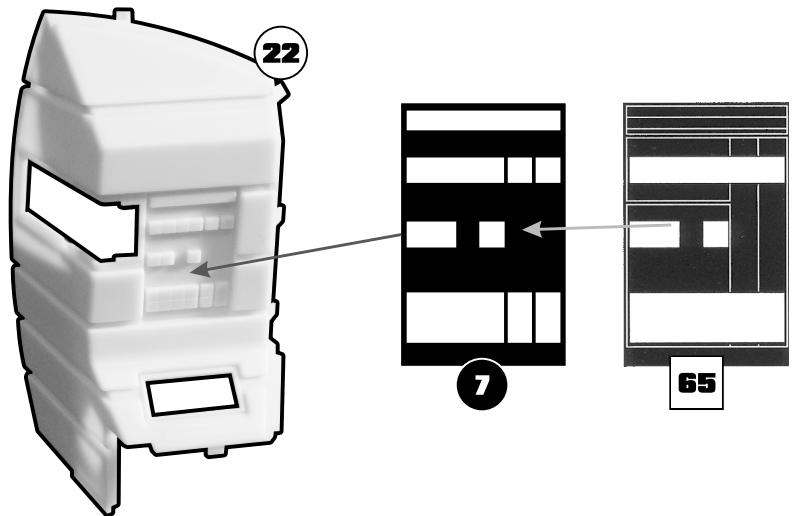
PORT (LEFT-HAND) CONTROL PANELS

As in the previous steps, paint the photoetched parts, attach decals, trim the decals, and mount the assembly to appropriate kit part.



PORT (LEFT-HAND) REAR CONTROLS

Paint etch part 7, apply decal 65 then trim out the holes, and attach to kit part 22.



Attleboro MA 02703 USA
+1 508-431-9800
www.ParaGrafix.biz

Many thanks to Moebius Models® for providing a preproduction copy of the EVA Pod kit so that we could develop this photoetch set.

Special thanks to Adam Johnson both for his 2001: The Lost Science books, which were a wealth of fantastic references, and for his help detailing items not covered in them.