

# FALCON COCKPIT

## For DeAgostini Kit ISSUES 1-7



ParaGrafix states that our use of the trademarked terms listed below in our product descriptions constitutes fair use and nominative use and is in no way to offer confusion that ParaGrafix and any of the following noted trademark holders are related companies, nor do we state that we are endorsed by these trademark holders. We are an AFTERMARKET company acting in GOOD FAITH in providing high quality products to loyal customers who have already purchased products related to these trademarks. ParaGrafix is actually providing these trademark holders a venue of free advertising and indirectly provide these trademark holders with more sales leads.  
© & TM 2015 Lucasfilm LTD. © & TM DeAgostini Publishing USA Inc., DeAgostini Editore S.p.A.

## INTRODUCTION

Thank you for purchasing ParaGrafix's cockpit upgrade set for the Millennium Falcon subscription kit from DeAgostini Publishing. This set is intended for modelers of moderate experience who are handy at modifying existing kit parts.

Please note that these instructions replace most all of the kit's instructions for assembling the cockpit. It is suggested that you familiarize yourself with all aspects of the cockpit assembly before proceeding.

## Materials

In addition to the photoetch, you will also need scissors or a knife\* to remove individual pieces from the main fret, a file to remove material left from cutting, and super glue (aka CA or cyanoacrylate). Additionally, to fold some pieces, you will need a pair of razor blades\*\* or a specialty tool such as PhotoFold from ParaGrafix.

\* We prefer a #17 Xacto chisel blade in combination with a glass cutting board or other, similarly hard cutting surface.

\*\* Extreme care must be taken when using razor blades. Risk of serious injury.

## Raised Detail

Where applicable, these instructions note an area where the raised kit detail must be removed. This may be done in whatever way you are most comfortable: sanding, filing, chiseling. Note that in most cases the surface does not need to be perfectly smooth as the photoetched part will replace the "lost" kit detail.

## Lighting Options

Unless otherwise noted, you can prep areas for lighting by removing plastic from areas where there are through holes in the photoetch. You can then backlight the photoetch. For best results, we suggest using Micro Kristal Klear from Microscale Industries ([www.microscale.com](http://www.microscale.com)) to fill the through holes before applying the decals.

## Installation Parts Order

The installation steps are not in any particular order. You can complete them as you see fit to complement your kit construction order.

## Decals

Please see JT Graphics' specific instructions for the use of the decals in conjunction with this set.

## Key

Kit part (plastic): **1**

Photoetched part: **1**

Decal: **A**

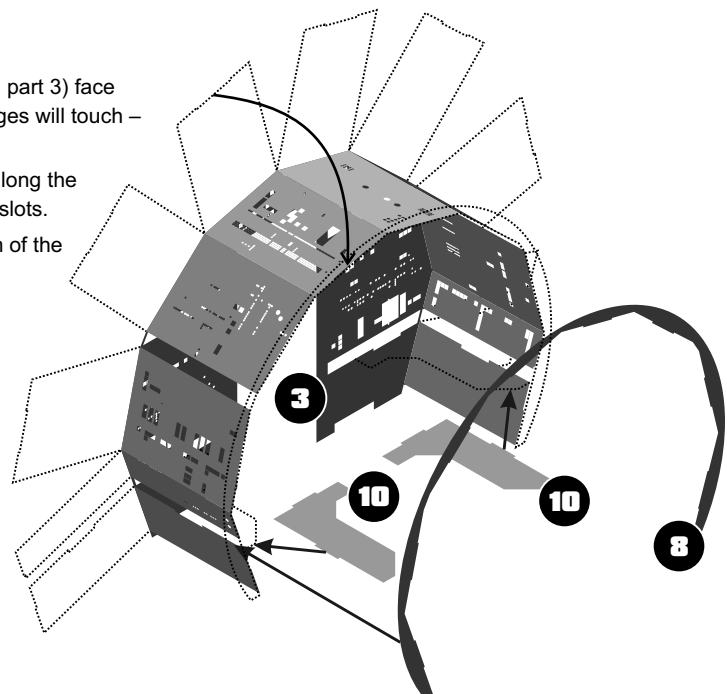
## Rear Bulkhead

### Basic Assembly

Fold etch part three so that all "petals" of the side bulkheads (etch part 3) face directly forward and matching edges touch. (Notice that not all edges will touch – the appropriate spacing is shown in the diagram.)

Attach the front ring (etch part 8) so that the petals mount inside along the flat edges of the ring with the small tabs located in their matching slots.

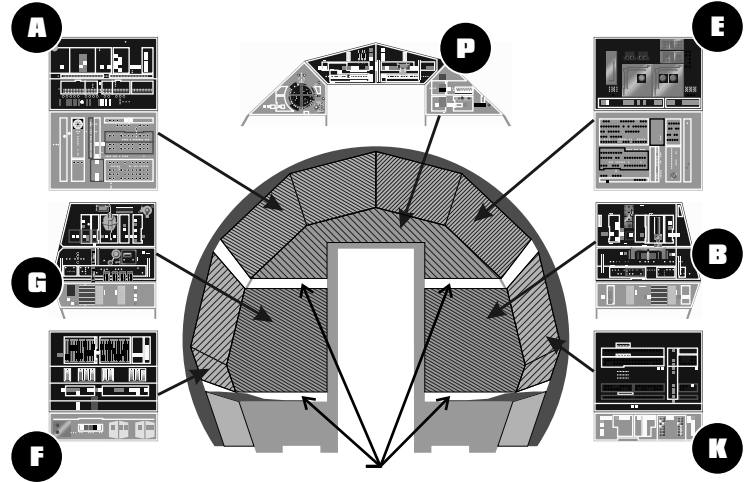
Mount shelves (10) so that their tabs fit into the slots in the bottom of the light bar.



# Rear Bulkhead

## Decal Application

Paint, fill holes (including light bars) with Micro Krystal Klear, and apply decals.

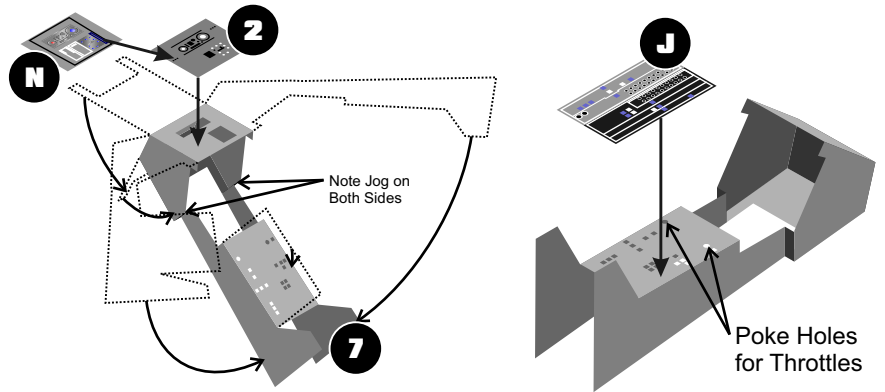


# Main Controls

## Center Console

Fold etch part 7 as shown and attach part 2.

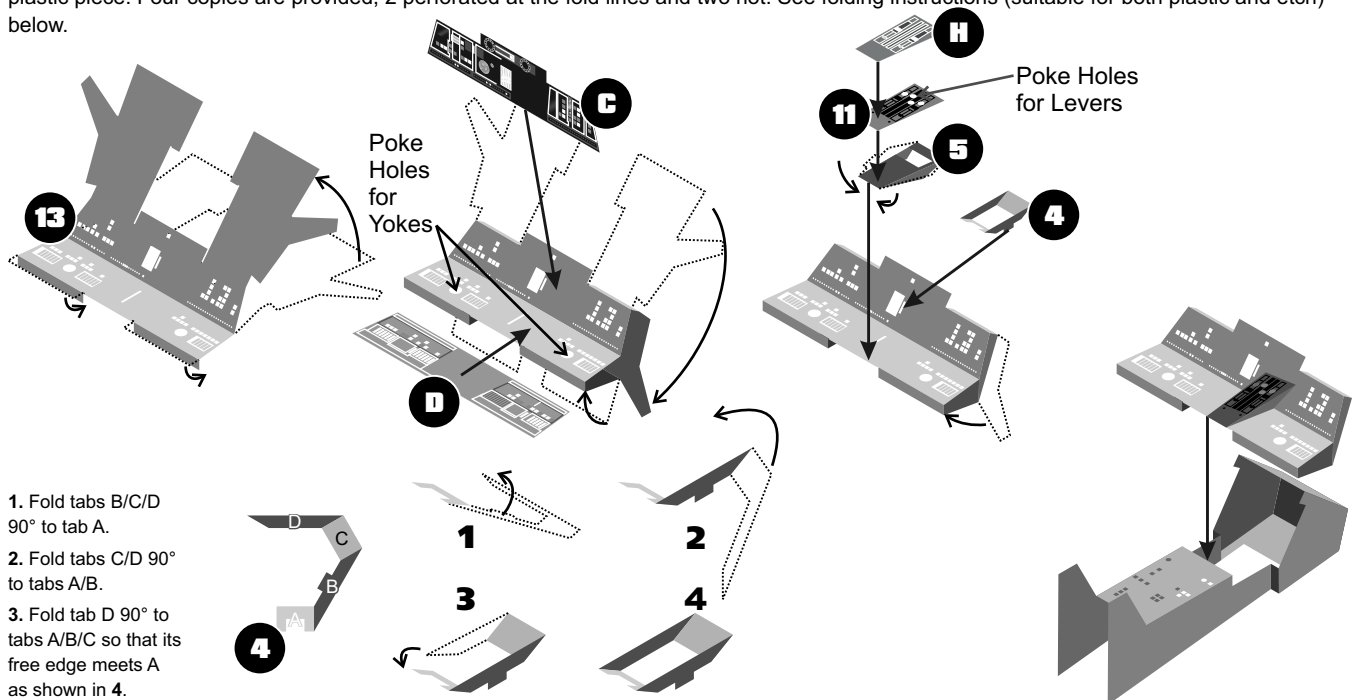
Paint, fill holes with Micro Krystal Klear, and apply decal.



## Flight Console

Fold etch parts 4, 5 and 13 as shown. Paint, fill holes with Micro Krystal Klear, and apply decals. Attach to completed center console.

**NOTE:** If you have the original release of this set (no "Rev 1" or greater under the part number) Part 4 is incorrect. Use the included, precut plastic piece. Four copies are provided, 2 perforated at the fold lines and two not. See folding instructions (suitable for both plastic and etch) below.



1. Fold tabs B/C/D 90° to tab A.
2. Fold tabs C/D 90° to tabs A/B.
3. Fold tab D 90° to tabs A/B/C so that its free edge meets A as shown in 4.

# Cockpit Assembly

Remove the areas shown in the kit cockpit's rear wall, center console/floor, the bottom of the door, and the fuselage tube. (The kit door is still used as the standoff for the circuit board.) Also, make sure that the hole indicate in the center console has sufficient clearance for the throttle. (See the templates on the back page for the rear wall and fuselage tube.)

## Center Console

Test fit the etch assembly and carefully file any snug areas. Attach as shown, noting that the bottom of the etch piece mounts at an angle.

## Rear- / Side-Walls

Assemble the rear and sidewalls as shown. Note that you may find it easier to leave the etch door parts (9 & 12) off until later.

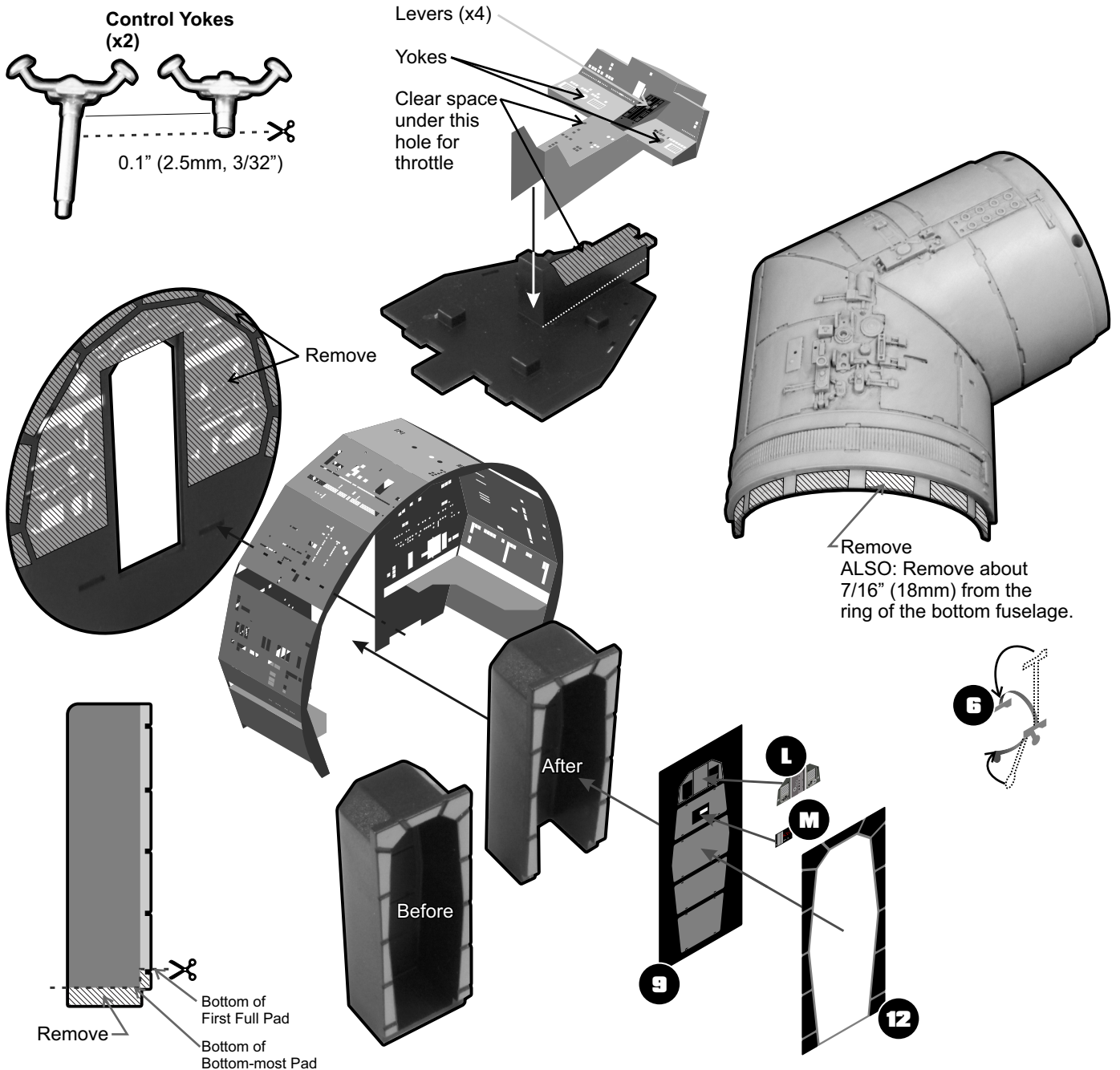
## Complete Assembly

Cut the two control yokes as shown below. They get mounted into the 2 large holes in the flight console rather than on the floor per the kit (that location was changed before filming).

Complete the cockpit assembly per the kit instructions, taking care to test fit the upper canopy piece and filing away any material that may damage the front cockpit ring (etch part 8).

## BONUS: Headsets

Four headsets (6) are included. Only 2 are needed, the other 2 are extras. Simply round the head strap and microphone as shown and place in the cockpit.



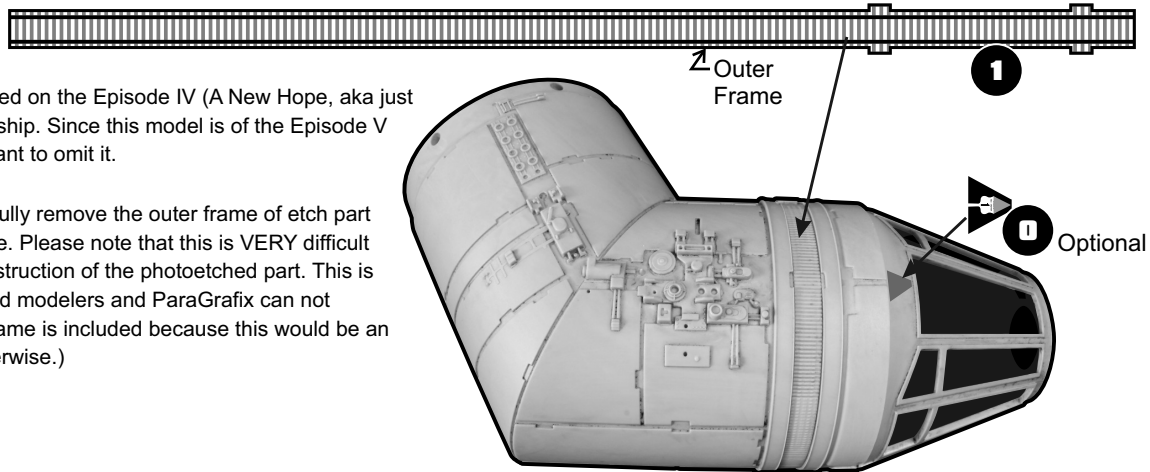
# Koolshade

Mount the Koolshade (1) into the groove in the cockpit tube. Note the locations of the notches.

**Optional:** Add decal O in the position shown.

Note that this was only used on the Episode IV (A New Hope, aka just Star Wars) version of the ship. Since this model is of the Episode V and VII model you may want to omit it.

**Überdetailing:** Carefully remove the outer frame of each part 1 to make it more accurate. Please note that this is VERY difficult and can likely result in destruction of the photoetched part. This is only intended for advanced modelers and ParaGrafix can not guarantee results. (The frame is included because this would be an extremely fragile part otherwise.)



## DECAL INSTRUCTIONS

Decals are best applied to a glossy surface. Apply glossy paint or spray a clear gloss coating on your model before applying decals. Carefully cut out the decal from the sheet and, using tweezers, dip the decal into plain water for 5 seconds or until the blue backing changes to a darker blue.

### WARNING:

Leaving the decal in the water too long may result in the glue washing off the decal. Lay the decal on your work surface for 30 seconds, and then slide the decal off the backing paper into position on your model. Gently blot the excess water. Allow to dry. Once the decals have dried thoroughly, you can use a sharp knife to gently cut and remove the excess decal film. Apply a second coat of clear finish over the model to seal the decals. A decal set may be used to help the decal conform to irregular surfaces and hides the decal film. This makes the artwork appear to be painted on the model, rather than applied by decal.

Another method used is to create an equal mixture of water and white glue (Elmer's). Using a brush, apply the mixture to the surface. While still wet, apply the decal. The glue will help the decal adhere to the surface and will dry clear. Once dry, wet a Q-tip and remove any excess glue from the model and decal by brushing out from the center of the decal. Brushing into the center may cause the decal edge to lift.

### Important: Please Read

The JT-Graphics decals you have purchased are coated with Testor's Clear Flat Lacquer. Using an Enamel clear coat such as Krylon or Rustolium may cause damage to the decal.

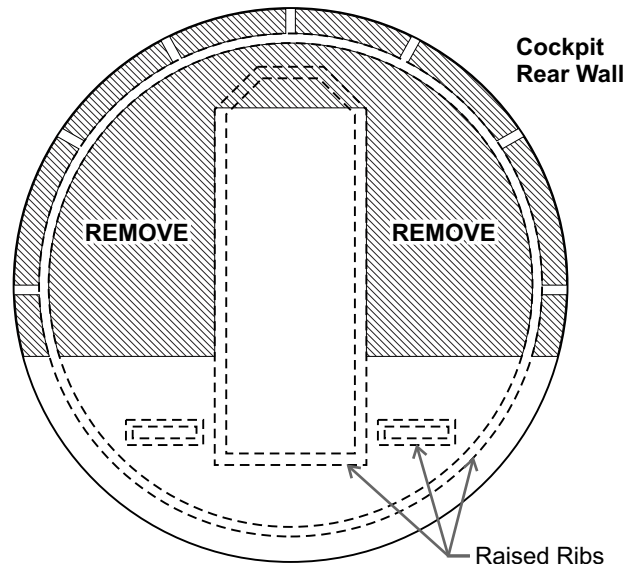
A known fact is that you can apply lacquer over enamel, but not enamel over lacquer. Therefore, it is suggested that after applying the decals, you only coat (seal) your model with a lacquer clear coat to avoid damaging the decals. Acrylic enamel may not react to the lacquer, but it has not been tested. Another suggestion is to use a piece of the decals, (such as the JT-Graphics logo or an optional decal you do not plan on using)

and test it. Apply your test decal to a painted surface similar to the one you will be applying to and test it against the clear coat you wish to use.

Besides using Testor's Clear lacquer as a sealer, you can also use Future Floor Wax as a clear coat.

Any problems or Questions contact:  
Jeffrey Waclawski 410-574-3220  
info@jt-graphics.com

## Templates



Feel free to photocopy these templates for personal use. Printable copy may be found at:  
[www.ParaGrafix.biz/instructions/PGX193\\_TEMPLATES.pdf](http://www.ParaGrafix.biz/instructions/PGX193_TEMPLATES.pdf)

### Cockpit Fuselage Tube



104 County Street, Suite 101  
Attleboro MA 02703 USA  
+1 508-431-9800  
[www.ParaGrafix.biz](http://www.ParaGrafix.biz)

Special thanks to Iain "Small Scale Futures" Costall for providing UK issues 1 through 8 to aid in the development of this set.